

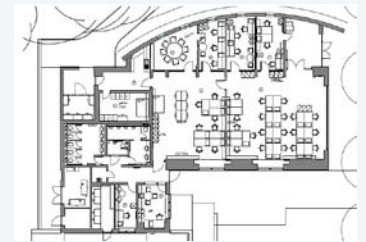
Cheltenham Ladies College



Site: Fauconberg House, Cheltenham
Offer: Building Surveying, Listed Building Consultancy and Project Management

Overview

Fauconberg House is a Grade II listed building designed by notable architect Samuel Onley and is one of the earliest buildings occupied by the Ladies College. Evans Jones was initially instructed to prepare a Feasibility Study for the external repair and restoration of the house and its grounds, the relocation of its medical centre and formation of conference facilities. Following successful completion of the feasibility study we were appointed as lead consultant acting as surveyors, designers and contract administrator for the refurbishment and re-use of Fauconberg House as a conferencing and meeting facility with new medical centre and art block.



Challenges



One of the challenges was to achieve a layout both suitable for the college's intended use whilst adopting a sensitive approach to the listed building. This was achieved in close consultation with the local authority conservation officer resulting in a layout which met, and in some cases exceeded the college's expectations. This was achieved by the Evans Jones building surveying team with support provided by the planning team at key stages. The main challenge in terms of contract administration was delivering the project on time in order to meet the opening date.

Results

In the role of Lead Consultant Evans Jones managed a number of third party specialists including interior designers, fire engineers, damp proofing specialists and kitchen equipment installers, who all worked together to produce a very pleasing end result, in particular to the ground floor where the conferencing and meeting facilities have proved a great success. The building now forms one of the college's first points of contact with parents and visitors, offering a conferencing and meeting facility for both the college and the local community. Following completion the building achieved a Civic Award.



To view more case studies, visit <http://www.evansjones.co.uk/case-studies>

Evans Jones Ltd, Royal Mews, St Georges Place, Cheltenham, Glos GL50 3PQ

☎ 01242 522822 ✉ info@evansjones.co.uk 🌐 www.evansjones.co.uk