

## Bourne Leisure

**Service:** Disabled Access Audits  
**Location:** Nationwide

### Project Overview:

Evans Jones were appointed by Bourne Leisure to carry out Disabled Access Audits across 13 of their Warner Leisure Hotels as well as create an Accessibility Management Plan for their new Studley Castle Hotel.

Bourne Leisure are one of the UK's leading holiday providers, their brands include Haven Holidays, Butlins and Warner Leisure Hotels. Bourne Leisure maintain high equality standards and aim to provide a fully inclusive experience to all guests regardless of their disabilities.

### Challenges:

Although most of the hotels are situated within listed buildings, which provides inevitable constraints for redevelopment,

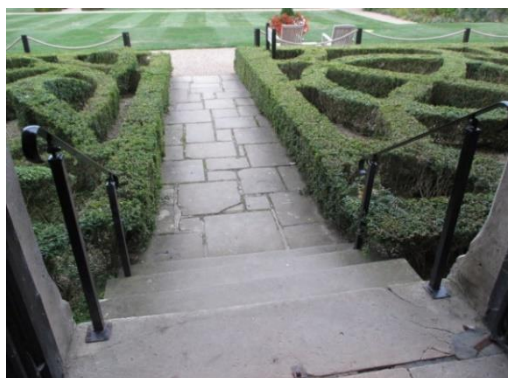


Evans Jones were able to provide suggestions to allow Bourne Leisure to achieve a good standard of accessibility for their guests.

### The Results:

Audits were completed by our team of trained in-house auditors to an agreed budget. A bespoke report format was then presented to the client which provided realistic recommendations and a clear priority schedule, allowing Bourne Leisure to plan their works accordingly.

Ref: DA13834



To view more case studies visit: [www.evansjones.co.uk/case-studies](http://www.evansjones.co.uk/case-studies)

Evans Jones Ltd, Royal Mews, St Georges Place, Cheltenham, Glos GL50 3PQ

 0800 0014 090

 [info@evansjones.co.uk](mailto:info@evansjones.co.uk)

 [www.evansjones.co.uk](http://www.evansjones.co.uk)