



 **evansjones** | Case Study

Project Monitoring

Travelodge Portishead

To view more case studies visit: www.evansjones.co.uk/case-studies

Cheltenham (HQ)

☎ Call us on 01242 522822

✉ cheltenham@evansjones.co.uk

London

☎ Call us on 0207 129 7980

✉ london@evansjones.co.uk

Thames Valley

☎ Call us on 0118 322 4646

✉ thamesvalley@evansjones.co.uk



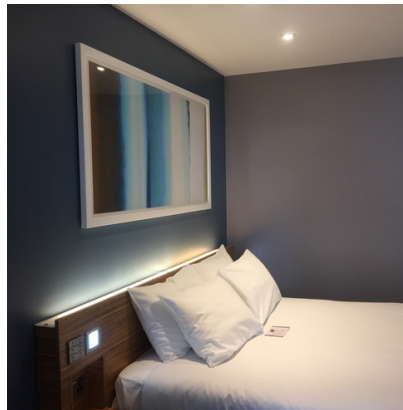
Project Overview:

Evans Jones are appointed to monitor the development of a 60 bedroom Travelodge hotel. Evans Jones project managed a new Travelodge hotel in portishead that forms part of a mixed-use development of a green field site, to include a Lidl supermarket, Subway and new Travelodge hotel.



Service: Project Monitoring

Location: Portishead



Results:

The hotel completed to schedule and was open for business in December 2011.