



 **evansjones** | Case Study

Project Management

Travelodge Chippenham

To view more case studies visit: www.evansjones.co.uk/case-studies

Cheltenham (HQ)

☎ Call us on 01242 522822

✉ cheltenham@evansjones.co.uk

London

☎ Call us on 0207 129 7980

✉ london@evansjones.co.uk

Thames Valley

☎ Call us on 0118 322 4646

✉ thamesvalley@evansjones.co.uk

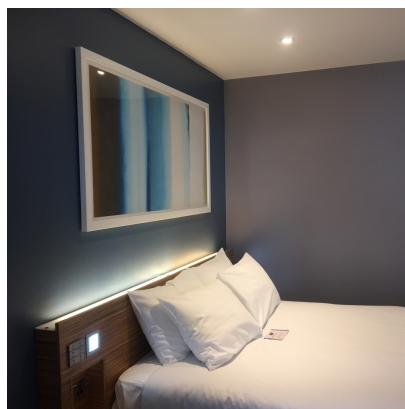


Project Overview:

Evans Jones were appointed to monitor the construction of a new 69 bedroom hotel located in Chippenham, Wiltshire. The new hotel is situated close to the historic town centre of Chippenham and within easy reach of the Southern Cotswolds. The 69 bedroom hotel with bar/cafe is the third Travelodge in the town and forms part of a mixed-use development with a coffee shop on the ground floor. The new hotel forms part of Travelodge expansion plan to open 100 more hotels over the next 5 years.



Service: Project Monitoring
Location: Chippenham



Challenges:

Evans Jones worked on behalf of Travelodge to monitor and manage the project through the construction phase to completion. It was integral to work closely with the Developer and Contractor to ensure that the hotel was progressing well and meeting targets.

Results:

Due to careful planning, Travelodge Chippenham was completed on time, to budget and in line with Travelodge's exacting quality standards. It successfully opened to its first customers in October 2019 and has created over 50 local jobs.