



# **evansjones** | Case Study

## **Planning Permission**

### **Andoversford Industrial Estate**

To view more case studies visit: [www.evansjones.co.uk/case-studies](http://www.evansjones.co.uk/case-studies)

#### **Cheltenham (HQ)**

☎ Call us on 01242 522822

✉ [cheltenham@evansjones.co.uk](mailto:cheltenham@evansjones.co.uk)

#### **London**

☎ Call us on 0207 129 7980

✉ [london@evansjones.co.uk](mailto:london@evansjones.co.uk)

#### **Thames Valley**

☎ Call us on 0118 322 4646

✉ [thamesvalley@evansjones.co.uk](mailto:thamesvalley@evansjones.co.uk)



### **Project Overview:**

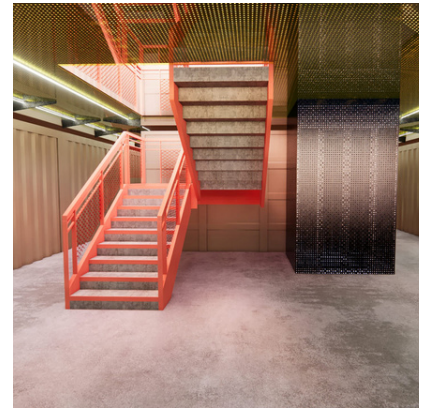
Successfully securing Planning Permission for a Bespoke Storage facility following the Redevelopment of a truck and bus repair building. Planning permission was successfully negotiated for the redevelopment of a dated industrial building into a bespoke storage facility. Edge Design Workshop collaborated with Evans Jones to guide the applicant through the planning application process. The project involved a combination of refurbishment and a modular new build to optimise the site for the storage facility.

### **Challenges:**

Evans Jones planning team addressed objections from the highway authority through preparing a comprehensive

**Service:** Town Planning

**Location:** Cotswolds



planning statement. This case study highlights the importance of collaboration, innovative design, and effective communication in achieving consent for the viable re-use and redevelopment of the former industrial building.

### **Results:**

The collaboration between the client, Edge Design Workshop, and Evans Jones Ltd resulted in:

- Maximising Storage Space:** The use of modular buildings allowed for a flexible and expansive storage facility. The planning and supplementary statements addressed concerns, gaining approval for the development.
- Sustainable Adaptive Reuse:** Repurposing the building and incorporating a modular system-based solution minimising waste and environmental impact.

