



 **evansjones** | Case Study

Conservation Area Consent

Cheltenham Ladies College

To view more case studies visit: www.evansjones.co.uk/case-studies

Cheltenham (HQ)

☎ Call us on 01242 522822

✉ cheltenham@evansjones.co.uk

London

☎ Call us on 0207 129 7980

✉ london@evansjones.co.uk

Thames Valley

☎ Call us on 0118 322 4646

✉ thamesvalley@evansjones.co.uk

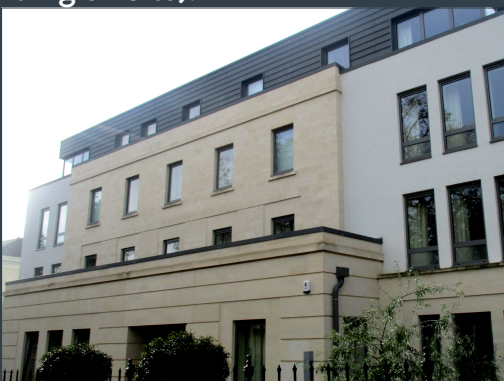


Project Overview:

Evans Jones was appointed by Cheltenham Ladies' College as Town Planning Consultants to guide the College and their Architects in securing detailed planning permission for a 70 bedroom Boarding House. Evans Jones provided pre-purchase advice to the College including detailed pre-application discussions with local authority planning and conservation officers, providing detailed guidance as to the viability of the College's proposals and a strategy for eventually securing the detailed planning permission.

Challenges:

The site presented numerous challenges being located within the Conservation Area and surrounded by existing residential and commercial occupiers. To accommodate the desired density the proposed building required one extra storey and greater site coverage (compared to the existing building on site).



Service: Conservation Area Consent
Location: Cheltenham



Evans Jones handled the public consultation, planning application, and presentation to planning committee, culminating in detailed planning and conservation area consent being granted by a unanimous vote at the planning committee.

Results:

The application generated wide public interest ranging from support to vehement objection. Evans Jones, using their skill and judgment, were able to delicately guide the application through to formal approval. As the works are now nearing completion this high quality building sits comfortably within its surroundings, validating the planning submissions made at the time of the original application. The success of the project followed detailed engagement with stakeholders and the consent as achieved provides a high quality building which positively enhances the Conservation Area