



 **evansjones** | Case Study

Access Audits

Greater Anglia Stations

To view more case studies visit: www.evansjones.co.uk/case-studies

Cheltenham (HQ)

☎ Call us on 01242 522822

✉ cheltenham@evansjones.co.uk

London

☎ Call us on 0207 129 7980

✉ london@evansjones.co.uk

Thames Valley

☎ Call us on 0118 322 4646

✉ thamesvalley@evansjones.co.uk



Project Overview:

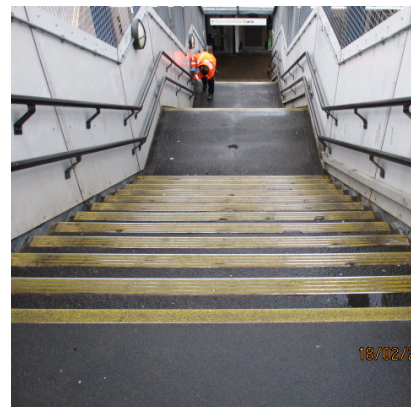
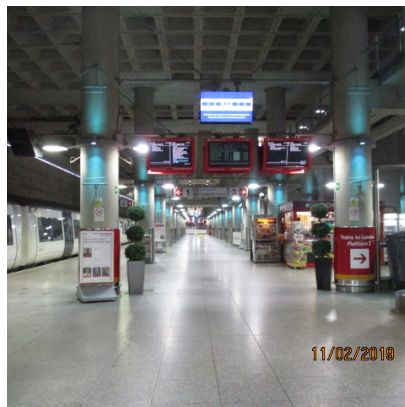
Greater Anglia is one of the UK's major train operators, with over 150 stations across London, South East and East Anglia. Evans Jones were appointed to provide Access Audits and Access Statements for 38 of their priority stations.

Challenges:

Working in frequently busy, high-traffic environments, Evans Jones' team of trained in-house auditors successfully

Service: Access Audits

Location: Various



inspected each site across a tight two-month time frame. Despite the challenging environment, workflow was managed as requested by the client and the project was delivered within the agreed timescale.

Results:

Due to our intervention, the client saved a lot of money and ended up with much-improved premises for little capital outlay, as well as a reduced repairing liability.

